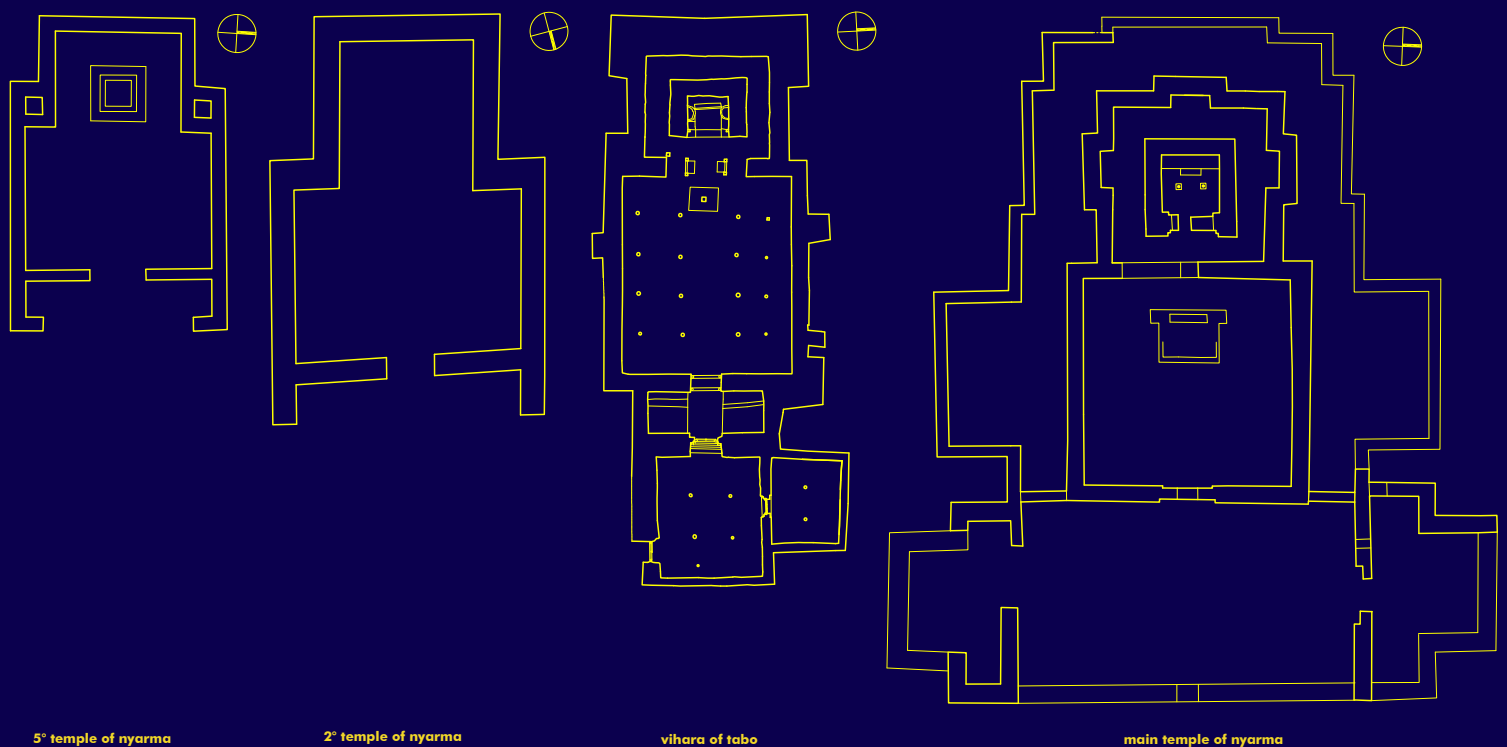


# Typology of the Temples

FWF-FSP - University of Vienna / University of Technology Graz / Holger Neuwirth



In fact, based on the working progress, for the first time the preconditions are met in order for the elaboration of the data to take place, and consequently to establish plans showing various distortions for the application to preservation measures, three-dimensional plans analysing the different historical layers of the buildings, and numerous schemes and diagrams for their visualisation. The great number of buildings that already has been analysed and registered in plans allows for a first typological and topological resume.

Basically, the goals set in the first request, namely to start with a comprehensive survey of early Buddhist monuments in the Western Himalaya dating from the 10th to the 14th century, could be met successfully. Nonetheless, the principal goal of the current project remains the survey of the largest possible number of buildings that are threatened by dilapidation, improper modernisation or unprofessional restoration works.

In parallel to that, the rapid evaluation, utilisation and publication of the gained data in the relevant and most appropriate medium is of special significance.

Text: Holger Neuwirth